

Mari-sol table base ø80 h:73cm

by Eugeni Quitllet

Created by designer Eugeni Quitllet for Vondom, the Mari-sol collection embodies a harmonious blend of form and function, presenting a masterpiece of contemporary design that seamlessly **blends technological innovation with captivating aesthetics**. At its core is a stunning designer table that serves as the centerpiece of outdoor spaces, captivating the senses with its seductive allure and timeless elegance. This collection redefines the essence of outdoor living, offering a symphony of style and sophistication that transcends boundaries. The Mari-sol table and its companion pieces are the ideal choice for enhancing patios and terraces around the globe, transforming any outdoor space into a luxurious retreat. With its thoughtful design and modern appeal, the Mari-sol collection transforms everyday moments into extraordinary experiences, inviting people to enjoy the beauty of outdoor living.



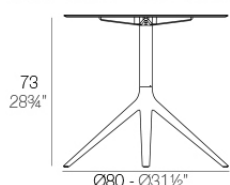
Info

Description

Extruded aluminum tube with cast aluminum base coated with epoxy baked painting. Item suitable for indoor and outdoor use. Table top not included.

Weight: 5.18 Kg

BASE 4 LEGS - BASE 4 PATAS



fixed top / fijo ref: 65016

fixed for glass / fijo para vidrio ref: 65016V

MARI-SOL BASE MESA Ø80 H73

MARI-SOL TABLE BASE Ø31 1/2" H28 3/4"

TABLE TOPS OPTIONS - OPCIONES SOBRES

Ø79 cm Ø31"	69 x 69 cm 27 1/4" x 27 1/4"
Ø89 cm Ø25"	79 x 79 cm 31" x 31"
Ø100 cm Ø39 1/4"	89 x 89 cm 25" x 25"

Finishes

finishes

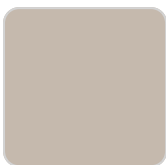
Fixed
Ref. 65016



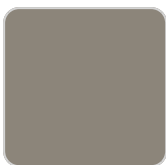
white



smoked



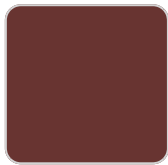
ecru



tortora



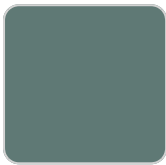
cream



garnet



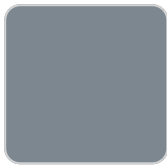
brown



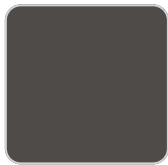
green



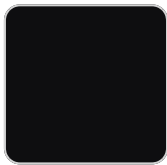
blue



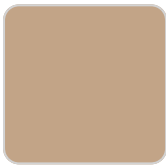
gray



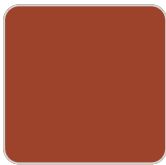
anthracite



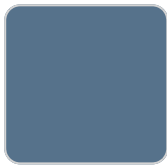
black



camel



clay



ocean

Powder coated aluminum base with non collapsable attachment made of polyamide and fiber glass

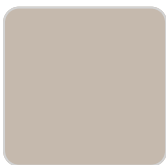
Top Abatible
Ref. 65016T



white



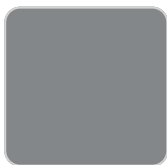
smoked



ecru



tortora

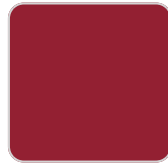


gray 2005

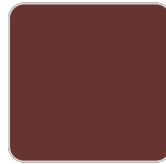
VONDONM



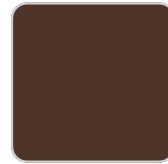
cream



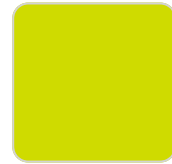
red



garnet



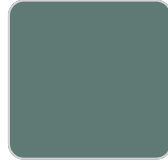
brown



pistachio



brown 2008



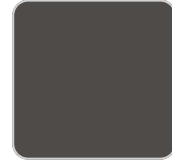
green



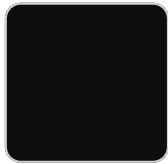
blue



gray



anthracite



black

Powder coated aluminum base with 90° collapsable attachment made of polyamide and fiber glass

Fixed for glass
Ref. 65016V



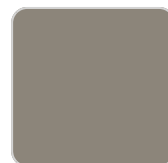
white



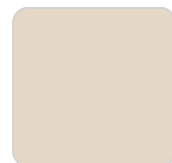
smoked



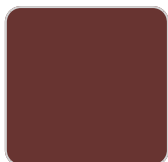
ecru



tortora



cream



garnet



brown



green



blue



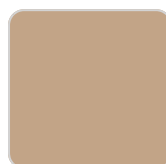
gray



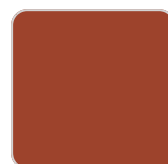
anthracite



black



camel



clay



ocean

Powder coated aluminum base with non collapsable aluminum attachment

powder coated, made exclusively for our glass tops.

tabletops

HPL Black Edge

Ref. 66110



white(black edge)



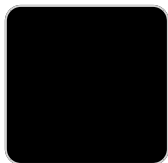
ecru(black edge)



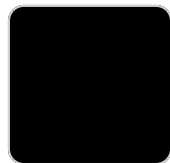
black(black edge)

HPL Solid Core

Ref. 66110B



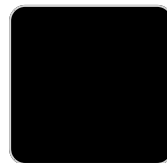
cream stone



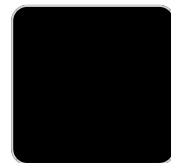
white stone



black stone



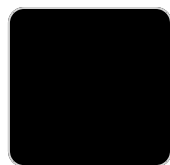
ecru stone



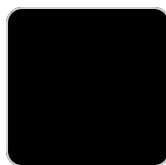
gray stone



smoked



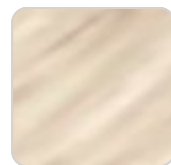
tortora stone



green stone



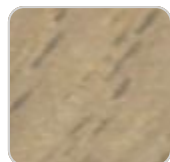
walnut



oak1



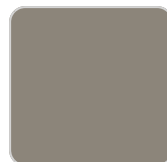
white (white edge)



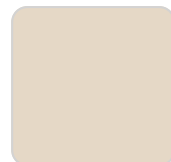
oak2



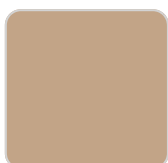
ecru



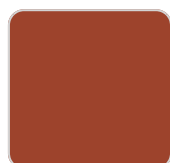
tortora



cream



camel



clay



garnet



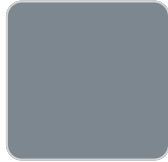
brown



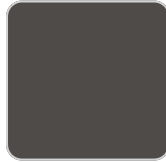
green



blue



gray



anthracite



ocean

TEMPERED GLASS

Ref. 66105

Ref. 66108

Ambients

