

Mari-sol 3-legged double table base

by Eugeni Quitllet

Created by designer Eugeni Quitllet for Vondom, the Mari-sol collection embodies a harmonious blend of form and function, presenting a masterpiece of contemporary design that seamlessly **blends technological innovation with captivating aesthetics**. At its core is a stunning designer table that serves as the centerpiece of outdoor spaces, captivating the senses with its seductive allure and timeless elegance. This collection redefines the essence of outdoor living, offering a symphony of style and sophistication that transcends boundaries. The Mari-sol table and its companion pieces are the ideal choice for enhancing patios and terraces around the globe, transforming any outdoor space into a luxurious retreat. With its thoughtful design and modern appeal, the Mari-sol collection transforms everyday moments into extraordinary experiences, inviting people to enjoy the beauty of outdoor living.



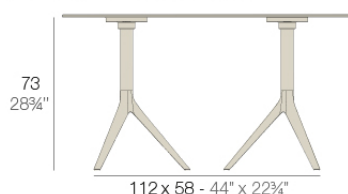
Info

Description

Extruded aluminum tube with cast aluminum base coated with epoxy baked painting. Item suitable for indoor and outdoor use. Table top not included.

Weight: 6.88 Kg

BASE 3 LEGS - BASE 3 PATAS



fixed top / fijo *ref.6503I*

collapsible top / abatible *ref.6503IT*

MARI-SOL BASE DOBLE 112x58 H73

MARI-SOL DOUBLE BASE 44x22 3/4 inch H28 3/4 inch

TABLE TOPS OPTIONS - OPCIONES SOBRES



119 x 69 cm

46 3/4 inch x 27 1/4 inch

Finishes

finishes

ALUMINIUM BASE

Ref. 65031T



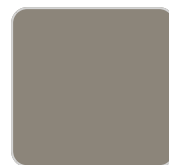
white



smoked



ecru



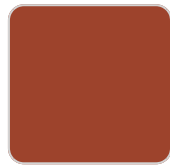
tortora



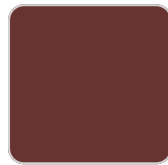
cream



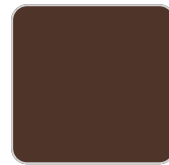
camel



clay



garnet



brown



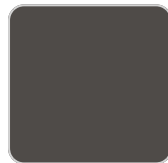
green



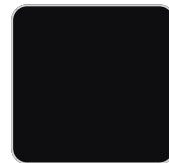
blue



gray



anthracite



black



ocean

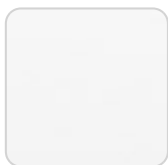
Powder coated aluminum base with 90° collapsable attachment made of polyamide and fiber glass

tabletops

HPL

Ref. 66031

VONDOM



white 201



ecru 2003



black 2002

HPL black edge

