

Curvada ø14x28

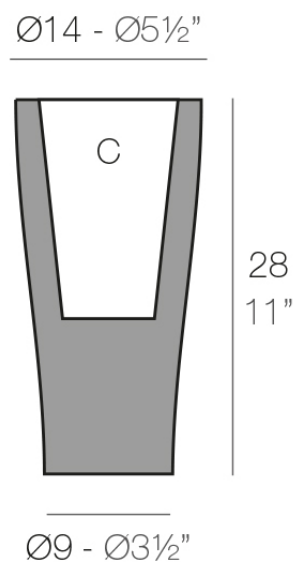


Info

Description

Pot made of polyethylene resin by rotational moulding. 100% Recyclable. Item suitable for indoor and outdoor use. Available in different finishes.

Weight: 0.5 Kg



CURVADA Nano Ø14 x 28 cm
CURVADA Nano Ø5½" x 11"

C = 1 L
C = ½ gal

Finishes

finishes

BASIC

Ref. 42114A



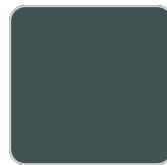
notte blue



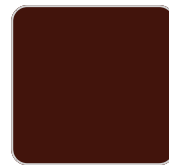
ice



crema



green



purjai red



orange



white



black



bronze



steel



anthracite



red



khaki



taupe



ecru



beige

Matt Polyethylene

LACQUERED

Ref. 42114F

VONDOM



notte blue



crema



purjai red



orange



white



black



bronze



steel



anthracite



red



khaki



taupe



ecru



beige



modo green



champany

Lacquered Polyethylene

lighting

WHITE LED
Ref. 42114W



ice

White internally lit unit with LED technology. Available only in matte ice white finish.

Ambients

