

Faz table 200x100x72

by Ramón Esteve

A commitment to minimalist aesthetics, Faz is a sleek and contemporary ensemble of outdoor furniture and planters designed by Ramón Esteve for Vondom. Esteve's creative vision for Faz transcends mere functionality and aims to integrate and harmonize with different spaces, be they residential or expansive installations. Through a deliberate selection of materials and the strategic incorporation of lighting elements, Ramón Esteve has created an atmosphere that exudes serenity, timelessness and an universality. His ability to blend form and function creates an immersive experience where the boundaries between indoors and outdoors are blurred, leaving behind only an impression of cohesive elegance. In short, he is the mastermind behind Faz's ambience.

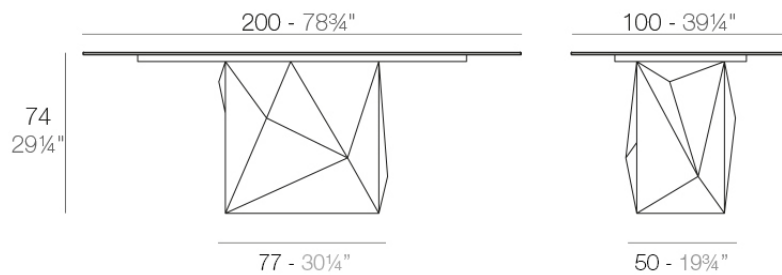


Info

Description

Made of polyethylene resin by rotational moulding. 100% Recyclable. Item suitable for indoor and outdoor use. Available in different finishes.

Weight: 100.15 Kg



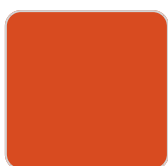
FAZ Mesa 200 x 100
FAZ Dining Table 78 $\frac{3}{4}$ " x 39 $\frac{1}{4}$ "

Finishes

finishes

BASIC

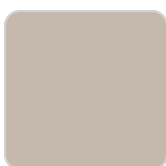
Ref. 54016B



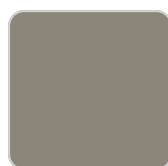
orange



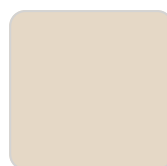
white 201



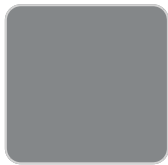
ecru 2003



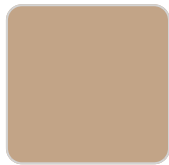
tortora 2004



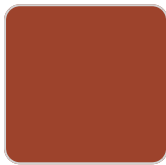
cream 2017



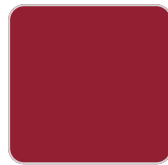
gray 2005



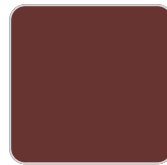
camel 2020



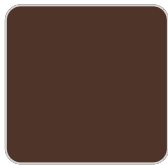
clay 2022



red



garnet 2015



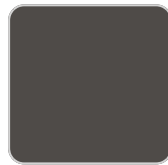
brown 2008



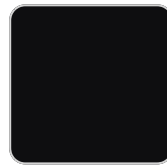
green 2016



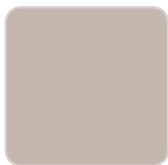
blue 2018



anthracite 2006



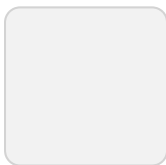
black 2002



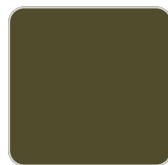
ecru granite



cream granite



ice 2101



khaki



beige

Matt Polyethylene

LACQUERED

Ref. 54016F



white 3101



ecru 3103



tortora 3104



cream 3117



garnet 3113



brown 3125



green 3116



blue 3118



gray 3105



anthracite 3106



black 3102

Lacquered Polyethylene

lighting

WHITE LED
Ref. 54016W



ice 2101

White internally lit unit with LED technology. Available only in matte ice white finish.

RGBW LED
Ref. 54016L



ice 2101

Unit with internal lighting with RGBW LED technology and remote control unit for switching colors. Available only in matte ice white finish. Remote control included.

RGBW LED DMX

Ref. 54016D



ice 2101

Unit with internal lighting with RGBW LED technology and remote control unit for switching colors. Also controlled by DMX-1024 (wireless), enabling communication between one or more products simultaneously via the DMX transmitter (not included). There are two options to choose from: Professional XLR DMX and Home WIFI DMX. (Remote control included).

Optional battery

RGBW LED BATTERY

Ref. 54016DYB

Unit with internal lighting with battery-powered RGBW LED technology. Includes charger and remote control for switching colors and charger. Available only in matte ice white finish.

RGBW LED DMX BATTERY

Ref. 54016DY



ice 2101

Unit with internal lighting with RGBW LED technology and remote control unit for switching colors. Also controlled by DMX-1024 (wireless), enabling communication between one or more products simultaneously via the DMX transmitter (not included). There are two options to choose from: Professional XLR DMX and Home WIFI DMX. (Remote control included).

tabletops

HPL

Ref. VVAR02176



white(black edge)



ecru(black edge)



black(black edge)

HPL black edge

Solid Core

Ref. VVAR02176B



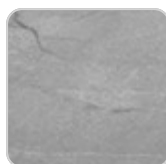
ecru stone



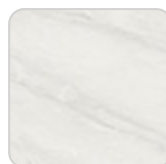
tortora stone



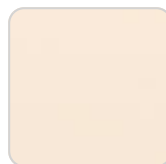
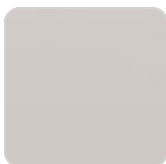
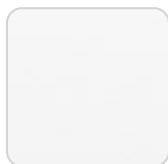
black stone



gray stone



white stone



VONDOM

smoked



garnet

white (white edge)



brown

ecru



green

tortora



blue

cream

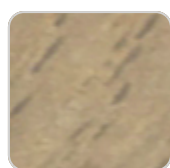


anthracite

Solid Core wood Ref. VVAR02176B



oak1



oak2

Ambients

