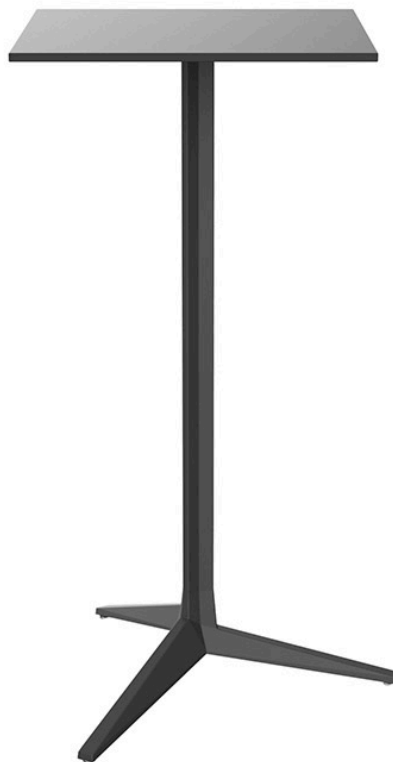


Faz table base h:105cm

by Ramón Esteve

Faz is a minimalist collection of modern outdoor furniture and planters designed by Ramón Esteve for Vondom. He has designed Faz to harmonize with both homes and installations, using mineral and emphatic shapes to create a sense of serenity, timelessness, and universality. By skillfully combining materials and lighting, he has crafted an environment that surrounds and envelops, leaving only the impression of seamless fusion. In short, he is the mastermind behind Faz's ambiance.



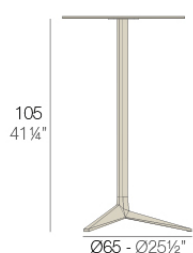
Info

Description

Extruded aluminum tube with cast aluminum base coated with epoxy baked painting. Item suitable for indoor and outdoor use. Table top not included.

Weight: 5 Kg

BASE 3 LEGS - BASE 3 PATAS



fixed top / fijo ref: 54127





collapsible top / abatible ref: 54127T

fixed for glass / fijo para vidrio ref: 54127V

FAZ BASE MESA Ø65 H105

FAZ TABLE BASE Ø25 1/2" H41 1/4"

TABLE TOPS OPTIONS - OPCIONES SOBRES

	Ø50 cm Ø19 1/4"		50 x 50 cm 19 1/4" x 19 1/4"
	Ø59 cm Ø23 1/4"		59 x 59 cm 23 1/4" x 23 1/4"

Finishes

finishes

Fixed

Ref. 54127



white



british gray



traffic gray



black



ecru



crema



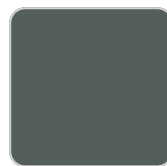
castoro fiber



cacao



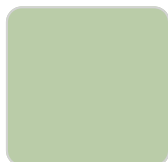
notte blue



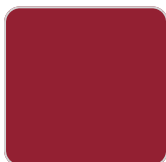
modo green



pickle



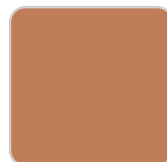
almond



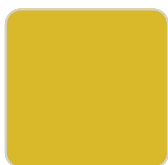
red



purjai red



melon



mostaza

Powder coated aluminum base with non collapsable attachment made of polyamide and fiber glass

COLLAPSIBLE TOP

Ref. 54127T



white



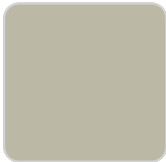
british gray



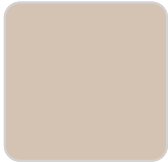
traffic gray



black



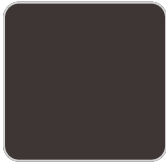
ecru



crema



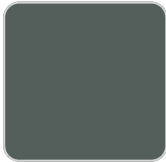
castoro fiber



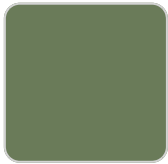
cacao



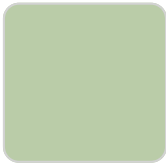
notte blue



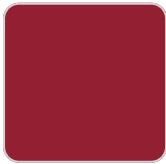
modo green



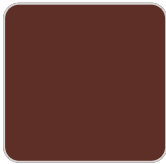
pickle



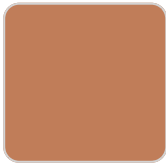
almond



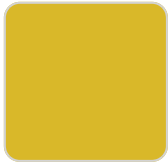
red



purjai red



melon



mostaza

Powder coated aluminum base with 90° collapsable attachment made of polyamide and fiber glass

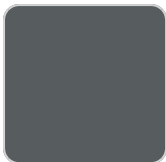
Fixed glass
Ref. 54127V



white



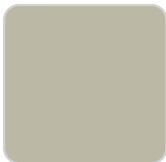
british gray



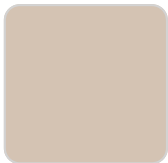
traffic gray



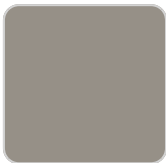
black



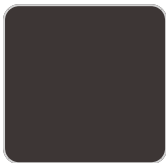
ecru



crema



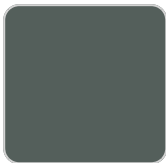
castoro fiber



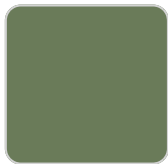
cacao



notte blue



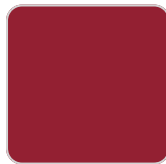
modo green



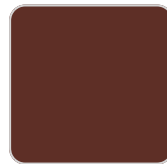
pickle



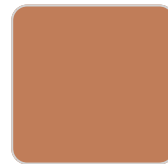
almond



red



purjai red



melon



mostaza

Powder coated aluminum base with non collapsable aluminum attachment powder coated, made exclusively for our glass tops.

Ambients

