

## Faz 3-legged double table base

by Ramón Esteve

Faz is a minimalist collection of modern outdoor furniture and planters designed by Ramón Esteve for Vondom. He has designed Faz to harmonize with both homes and installations, using mineral and emphatic shapes to create a sense of serenity, timelessness, and universality. By skillfully combining materials and lighting, he has crafted an environment that surrounds and envelops, leaving only the impression of seamless fusion. In short, he is the mastermind behind Faz's ambiance.



## Info

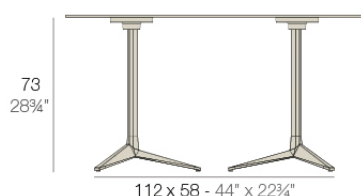
---

### Description

Extruded aluminum tube with cast aluminum base coated with epoxy baked painting. Item suitable for indoor and outdoor use. Table top not included.

Weight: 8.39 Kg

#### DOUBLE BASE - BASE DOBLE



fixed top / fijo *ref. 54166*

collapsible top / abatible *ref. 54166T*

FAZ BASE DOBLE 112x58 H73

FAZ DOUBLE BASE 44x22 3/4" H28 3/4"

#### TABLE TOPS OPTIONS - OPCIONES SOBRES



119 x 69 cm

46 3/4" x 27 1/4"

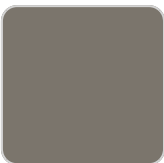
Finishes

finishes

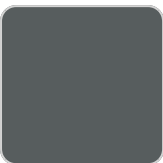
Fixed  
Ref. 54166



white



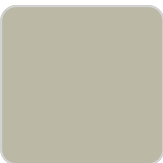
british gray



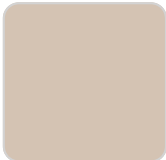
traffic gray



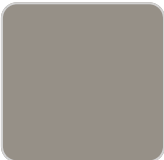
black



ecru



crema



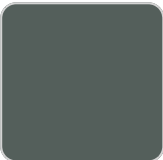
castoro fiber



cacao



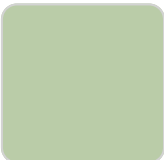
notte blue



modo green



pickle



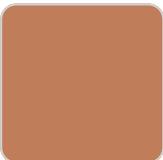
almond



red



purjai red



melon



mostaza



Powder coated aluminum base with non collapsable attachment made of polyamide and fiber glass

COLLAPSIBLE TOP  
Ref. 54166T



white



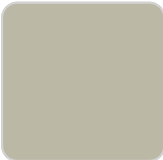
british gray



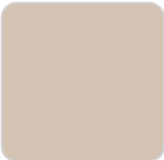
traffic gray



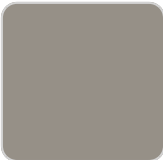
black



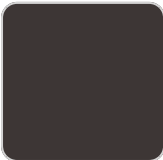
ecru



crema



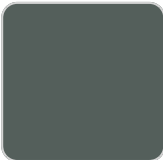
castoro fiber



cacao



notte blue



modo green



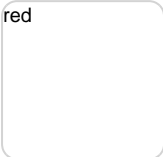
pickle



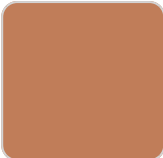
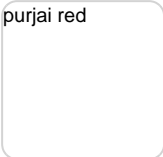
almond



red



purjai red



melon



# VONDOM

mostaza



Powder coated aluminum base with 90° collapsable attachment made of polyamide and fiber glass

## Ambients

---

