

Quartz dining table ø69

by Ramón Esteve

The Quartz modern chairs and tables collection, designed by Ramón Esteve for Vondom, possesses an distinctive appearance featuring **perpendicular lines** and triangular profiles. Due to the line of one of its vertices this collection appears extremely light.

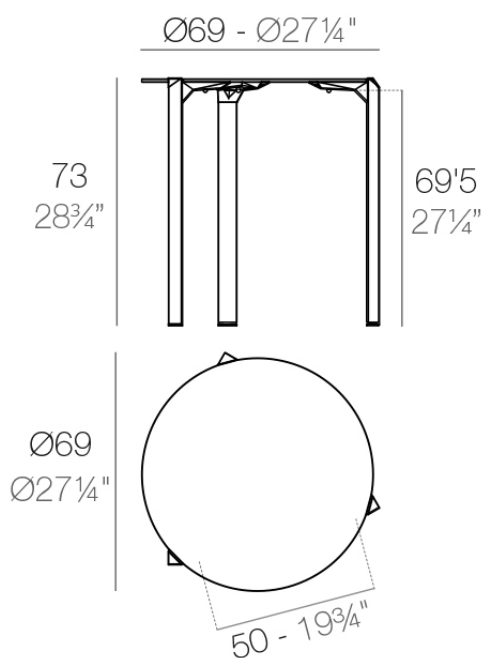


Info

Description

Made from polypropylene and reinforced with fiberglass manufactured by gas injection. Available in various colors. Suitable for indoor and outdoor use.

Weight: 6.53 Kg



QUARTZ Mesa Ø69
QUARTZ Table Ø27 1/4"

Finishes

finishes

BASIC PP
Ref. 54199



white



black



ecru

Available in various colors

tabletops

Solid Core
Ref. VVAR02349

HPL
Ref. VVAR02349

HPL black edge

tabletops

Solid Core
Ref. VVAR02349

VONDOM



traffic gray



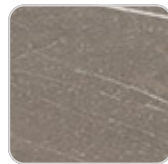
crema



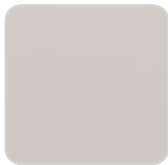
castoro fiber



yule brown



pulpis gray



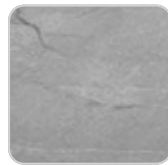
piombo gray



kandia black



cacao



yule gray



modo green



gioia bianco



purjai red



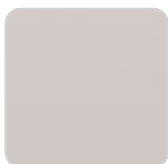
british gray



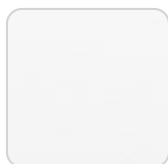
notte blue

HPL

Ref. VVAR02349



ecru(black edge)



white(black edge)



black(black edge)

HPL black edge

