

Quartz dining table ø79

by Ramón Esteve

The Quartz modern chairs and tables collection, designed by Ramón Esteve for Vondom, possesses an distinctive appearance featuring **perpendicular lines** and triangular profiles. Due to the line of one of its vertices this collection appears extremely light.

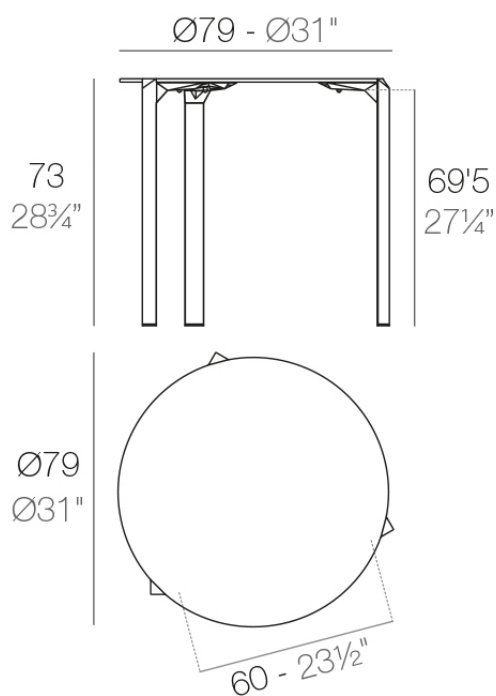


Info

Description

Made from polypropylene and reinforced with fiberglass manufactured by gas injection. Available in various colors. Suitable for indoor and outdoor use.

Weight: 8.31 Kg



QUARTZ Mesa Ø79
QUARTZ Table Ø31"

Finishes

finishes

BASIC PP
Ref. 54200



white



black



ecru

Available in various colors

tabletops

Solid Core
Ref. VVAR02350

HPL
Ref. VVAR02350

HPL black edge

tabletops

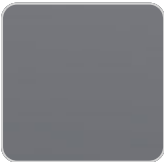
Solid Core
Ref. VVAR02350



british gray



notte blue



traffic gray



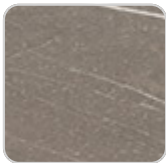
crema



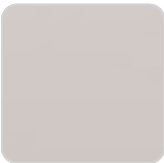
castoro fiber



yule brown



pulpis gray



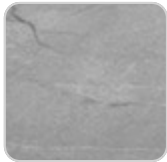
piombo gray



kandia black



cacao



yule gray



modo green

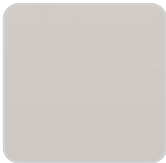


gioia bianco



purjai red

HPL
Ref. VVAR02350

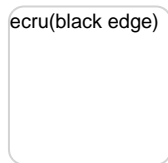


VONDOM

black(black edge)



ecru(black edge)



white(black edge)



HPL black edge

