

Quartz dining table 69x69

by Ramón Esteve

The Quartz modern chairs and tables collection, designed by Ramón Esteve for Vondom, possesses an distinctive appearance featuring **perpendicular lines** and triangular profiles. Due to the line of one of its vertices this collection appears extremely light.

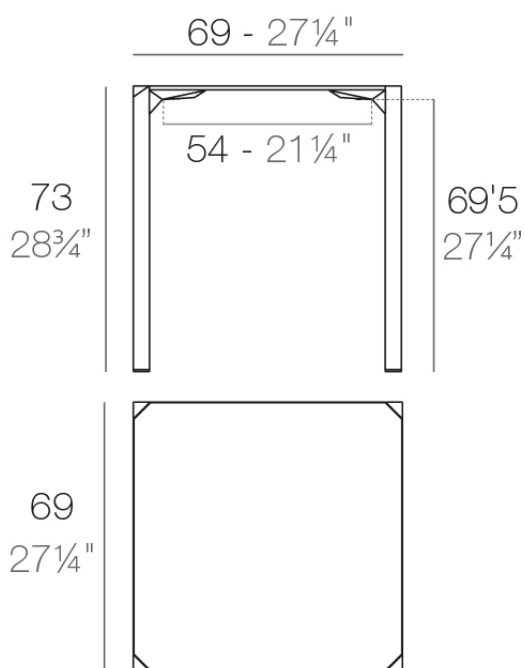


Info

Description

Made from polypropylene and reinforced with fiberglass manufactured by gas injection. Available in various colors. Suitable for indoor and outdoor use.

Weight: 8.51 Kg



QUARTZ Mesa 69 x 69
QUARTZ Table 27 1/4" x 27 1/4"

Finishes

finishes

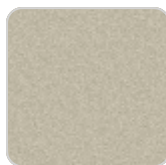
BASIC PP
Ref. 54204



white



black



ecru

Available in various colors

tabletops

Solid Core
Ref. VVAR02392

HPL
Ref. VVAR02392

HPL black edge

Solid Core wood

Ref. VVAR02392

tabletops

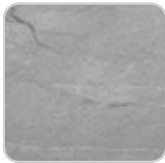
Solid Core
Ref. VVAR02392



kandia black



cacao



yule gray



modo green



gioia bianco



purjai red



british gray



notte blue



traffic gray



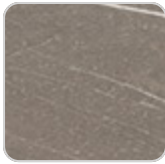
crema



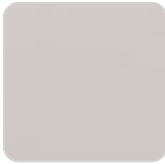
yule brown



castoro fiber

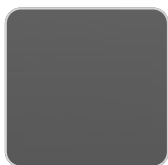


pulpis gray

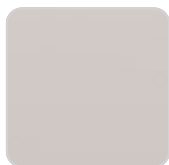


piombo gray

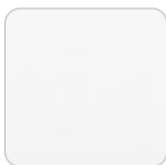
HPL
Ref. VVAR02392



black(black edge)



ecru(black edge)



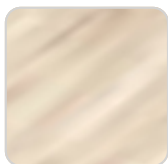
white(black edge)



HPL black edge

Solid Core wood

Ref. VVAR02392



oak1



oak2



