

Kimono chair

by Ramón Esteve

Vondom pays tribute to the culture of the Orient in the latest creation from Ramón Esteve: this designer modernist chair is inspired by the elegant forms of the kimono, blending futuristic and traditional design elements. The reference to the Japanese garment is intentional, as its fabrics are steeped in symbolism and history.

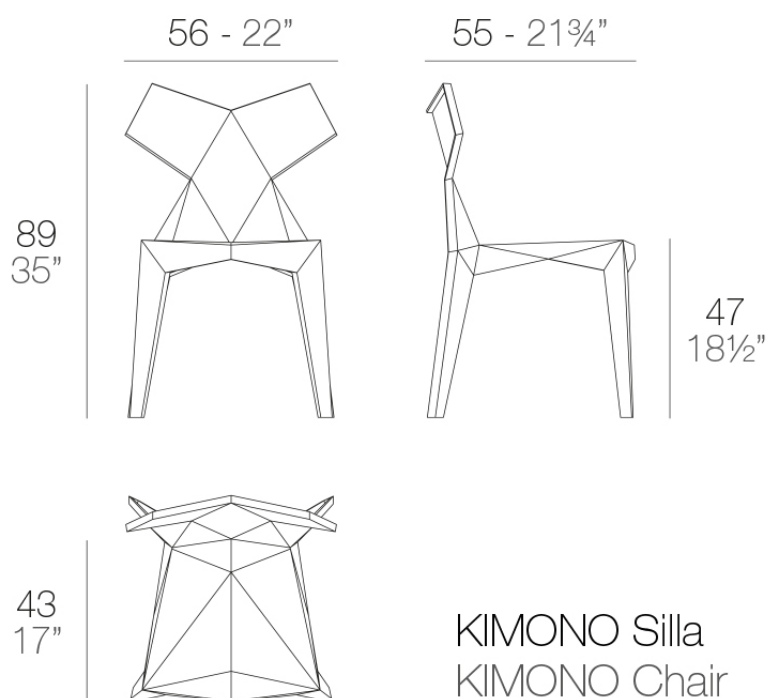


Info

Description

Made from polypropylene and reinforced with fiberglass manufactured by gas injection. Stackable. Available in various colors. Suitable for indoor and outdoor use.

Weight: 5.1 Kg



Finishes

finishes

BASIC PP
Ref. 54299



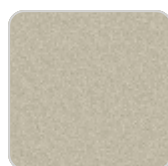
white



crema



tortora



ecru



black

Available in various colors

Ambients

