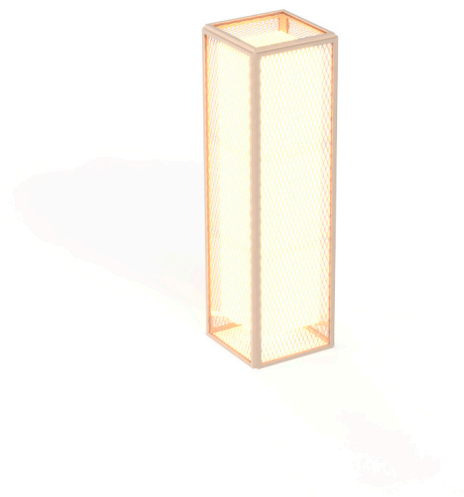


## The factory lamp m

by Ramón Esteve

The Factory collection, designed by Ramón Esteve for Vondom, epitomizes the intersection of cutting-edge design and enduring functionality. Ramón Esteve's meticulous attention to detail is evident in the aluminum profiles and the “deployé” weave technique, setting a new standard for luxury outdoor furniture.

This collection includes a modular sofa, armchair, lounger, side table, lamp, coffee table, high table, chairs and room divider, each piece crafted in Europe to enhance outdoor spaces with elegance and comfort.



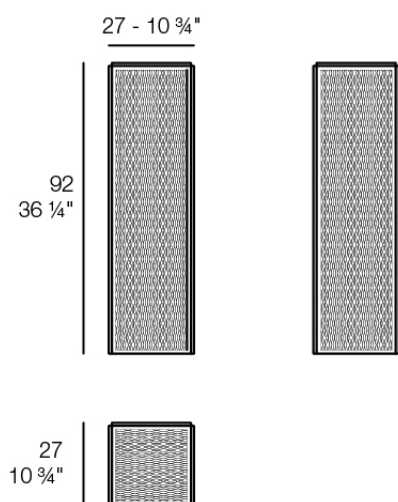
## Info

---

### Description

Designer lamp. The deployed mesh is made from aluminum, and the inner lighting is made out of polyethylene resin manufactured by rotational molding. Suitable for an interior and an outdoor use. Available in various finishes.

Weight: 7.29 Kg



THE FACTORY Lámpara 27 x 27 x 92  
THE FACTORY Puff S 10 3/4 x 10 3/4 x 36 1/4"

## Finishes

---

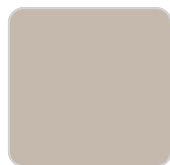
### lighting

---

#### WHITE LED Ref. 54615W



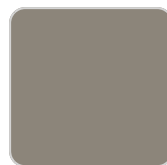
white



ecru



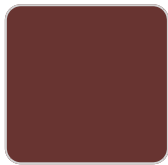
smoked



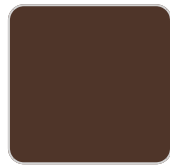
tortora



cream



garnet



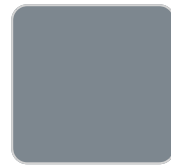
brown



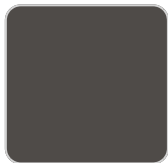
green



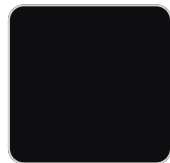
blue



gray



anthracite



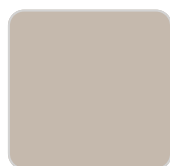
black

White internally lit unit with LED technology. Available only in matte ice white finish.

#### RGBW LED Ref. 54615L



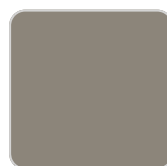
white



ecru



smoked



tortora



cream



garnet



brown



green



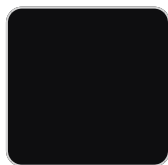
blue



gray



anthracite



black

Unit with internal lighting with RGBW LED technology and remote control unit for switching colors. Available only in matte ice white finish. Remote control included.

## RGBW LED DMX

Ref. 54615D



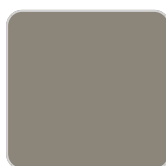
white



ecru



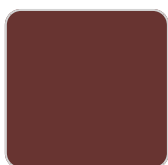
smoked



tortora



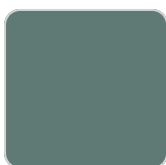
cream



garnet



brown



green



blue



gray



anthracite



black

Unit with internal lighting with RGBW LED technology and remote control unit for switching colors. Also controlled by DMX-1024 (wireless), enabling communication between one or more products simultaneously via the DMX transmitter (not included). There are two options to choose from: Professional XLR DMX and Home WIFI DMX. (Remote control included).

Optional battery

## RGBW LED BATTERY

Ref. 54615Y



white



ecru



smoked



tortora



cream



garnet



brown



green



blue



gray



anthracite



black

Unit with internal lighting with battery-powered RGBW LED technology. Includes charger and remote control for switching colors and charger. Available only in matte ice white finish.

## RGBW LED DMX BATTERY

Ref. 54615DY



white



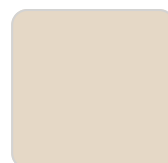
ecru



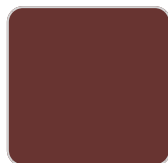
smoked



tortora



cream



garnet



brown



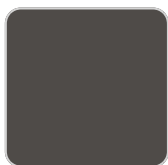
green



blue



gray



anthracite



black

Unit with internal lighting with RGBW LED technology and remote control unit for switching colors. Also controlled by DMX-1024 (wireless), enabling communication between one or more products simultaneously via the DMX transmitter (not included). There are two options to choose from: Professional XLR DMX and Home WIFI DMX. (Remote control included).

## Ambients

---

