

## Hamptons puff

by Ramón Esteve

Hamptons, the **new collection of designer outdoor furniture** consists of a set of pieces where a careful selection of fabrics and patterns evoke that “lifestyle” where elegance is perceived in the finest details.



## Info

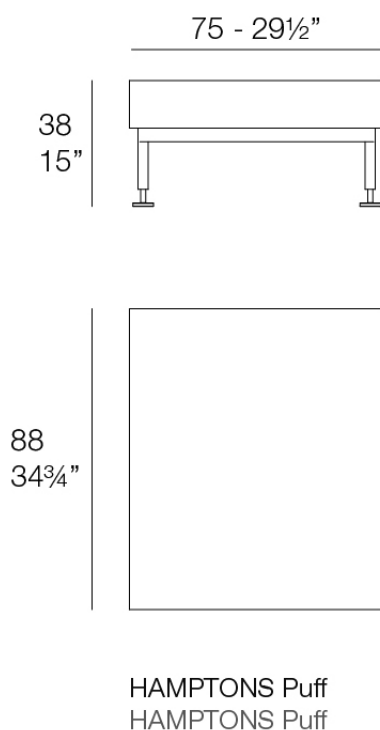
---

### Description

Ramón Esteve has designed an elegant modular sofa with a solid aluminium structure, teak details and polished aluminium legs. Its upholstery, devised for outdoor use,

combines weather resistance with the comfort of an indoor fabric. Available in a varied colour palette, it is versatile to suit both outdoor and indoor spaces.

Weight: 24.99 Kg



Finishes

finishes

ALUMINIUM  
Ref. 54808



white



british gray



traffic gray



black



ecru



crema



castoro fiber



cacao



notte blue



modo green



pickle



almond



red

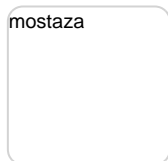


purjai red



melon





Lacquered aluminium profile.

## fabric

---

SILVERTEX  
Ref. 54808RIB

Vinyl fabric suitable for indoor and outdoor use. Special option for upholstery.

CREVIN  
Ref. 54808RIB

Upholstery fabric, that as and natural appearance and can be easy cleaned by washing machines, allowing an easy removal of mildew. Suitable for indoor and outdoor use

CICO  
Ref. 54808RIB

Cozy fabric with an elegant look and soft touch.

ACAPULCO  
Ref. 54808RIB

Cozy fabric with an elegant look and soft touch.  
SIESTA  
Ref. 54808RIB



Cozy fabric with an elegant look and soft touch.

IKON

Ref. 54808RIB

Cozy fabric with an elegant look and soft touch.

HERITAGE

Ref. 54808RIB

Outdoor fabrics are waterproof 50% recycled acrylic, 47% acrylic and 3% PE.

SAVANE

Ref. 54808RIB

Outdoor fabrics are waterproof 100% acrylic.

## fabric

---

SILVERTEX

Ref. 54808CO



forest 1224



purjai red 1223



notte blue 1222



ecru 1221



natural 1220

# VONDOM



white 1219



beige 1211



bronze 1214



khaki 1218



steel 1208



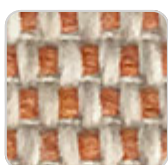
taupe 1209



antrachite 1210

Vinyl fabric suitable for indoor and outdoor use. Special option for upholstery.

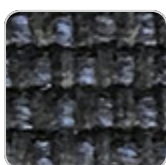
## CREVIN Ref. 54808CO



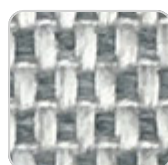
melon 1304



lemongrass 1303



deep blue 1302



blue 1301



white 1308



steel 1309



taupe 1310



anthracite 1311

Upholstery fabric, that as and natural appearance and can be easy cleaned by

# VONDOM

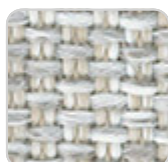
washing machines, allowing an easy removal of mildew. Suitable for indoor and outdoor use

## CICO

Ref. 54808CO



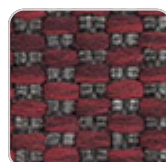
sandstone 1703



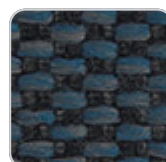
gravel 1702



limestone 1701



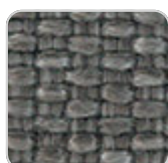
cranberry 1707



blueberry 1706



onyx 1705



greywacke 1704

Cozy fabric with an elegant look and soft touch.

## ACAPULCO

Ref. 54808CO



acapulco 1804



acapulco 1803



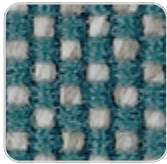
acapulco 1802



acapulco 1801



acapulco 1806



acapulco 1805

Cozy fabric with an elegant look and soft touch.

## SIESTA

Ref. 54808CO



siesta 1813



siesta 1812



siesta 1811



siesta 1810

Cozy fabric with an elegant look and soft touch.

## IKON

Ref. 54808CO



ikon 1834



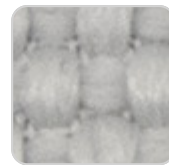
ikon 1833



ikon 1830



ikon 1832



ikon 1831

# VONDOM



ikon 1835

Cozy fabric with an elegant look and soft touch.

## HERITAGE Ref. 54808CO



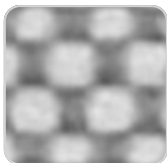
papyrus 1530



granite 1531

Outdoor fabrics are waterproof 50% recycled acrylic, 47% acrylic and 3% PE.

## SAVANE Ref. 54808CO



whisper 1502



white 1501



tornado 1503

Outdoor fabrics are waterproof 100% acrylic.

## Ambients

---

