

Incasso swivel armchair with wooden legs

by Archirivolto Design

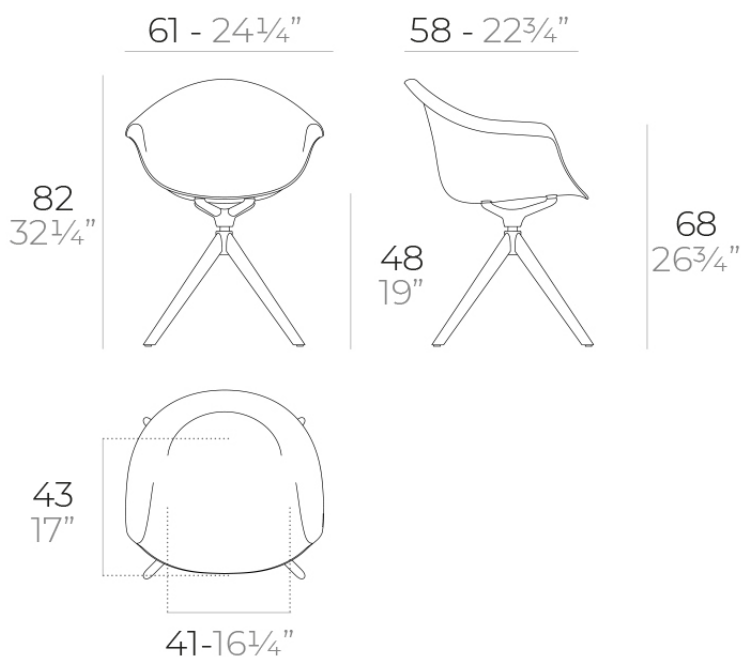


Info

Description

Made from polypropylene and reinforced with fiberglass manufactured by gas injection. Available in various colors. Suitable for indoor and outdoor use.

Weight: 9.3 Kg

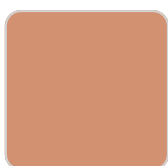


INCASSO Sillón giratorio madera
INCASSO Wooden swivel Armchair

Finishes

finishes

BASIC PP
Ref. 56032



melon



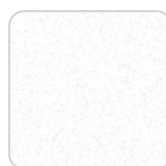
tortora



ecru



black



white

Available in various colors

legs

LEGS
Ref. 65055E



white wood 1



negro wood 2



negro wood 1



white wood 2

Ambients

