

Incasso armchair

by Archirivolto Design

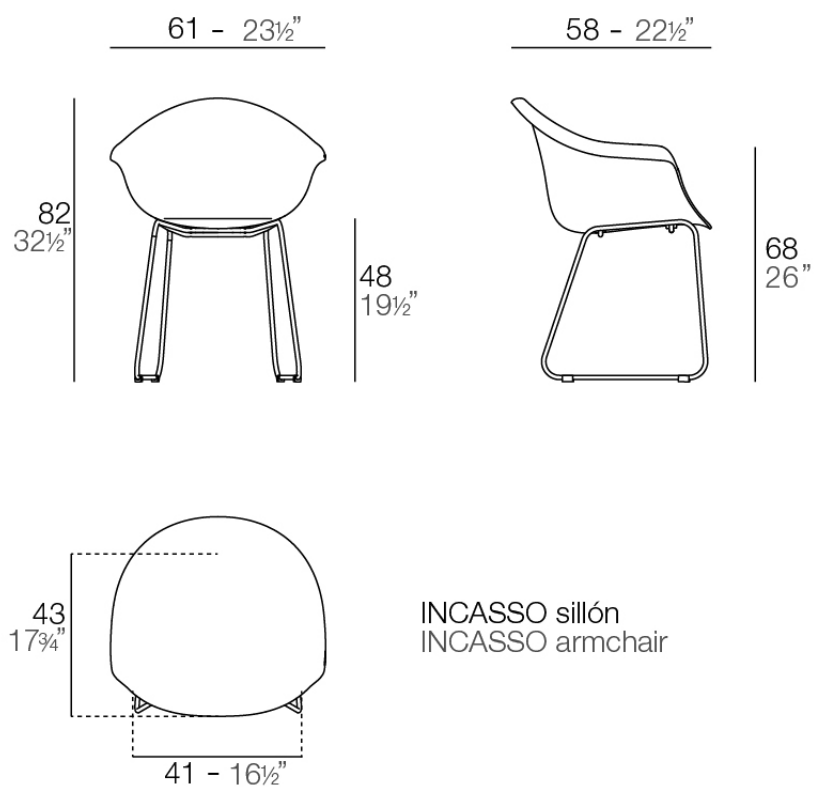


Info

Description

Made from polypropylene and reinforced with fiberglass manufactured by gas injection. Available in various colors. Suitable for indoor and outdoor use.

Weight: 5.6 Kg



Finishes

finishes

BASIC PP
Ref. 56034



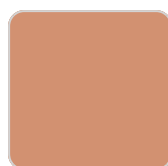
ecru



black



white



melon



tortora

Available in various colors

legs

LEGS
Ref. VVAR03438



white



black

Ambients

