

## Bones planter 44x52x70

by Ludovica + Roberto Palomba

Bones the elegant designer planter collection by the italian architects Ludovica+Roberto Palomba for Vondom.



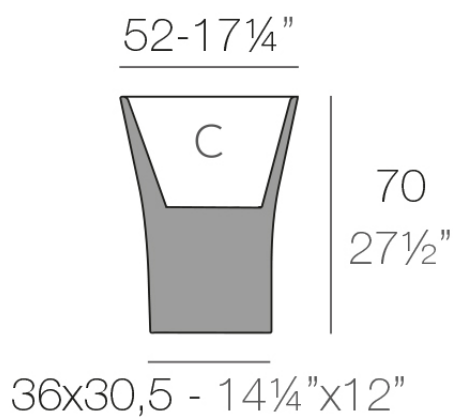
## Info

---

### Description

Pot made of polyethylene resin by rotational moulding. 100% Recyclable.  
Item suitable for indoor and outdoor use. Available in different finishes.

Weight: 6 Kg



BONES Maceta 70  
BONES Planter 70

C = 29 L  
C = 7¾ gal

## Finishes

---

### finishes

---

#### BASIC

Ref. 57002A



crema



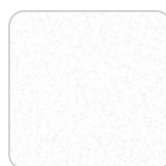
green



purjai red



orange



ice



notte blue



white



black



bronze



steel



anthracite



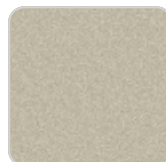
red



khaki



taupe



ecru



beige

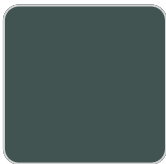
#### Matt Polyethylene

#### SELF-WATERING

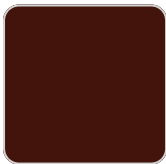
Ref. 57002R



crema



green



purjai red



orange



ice



notte blue



white



black



bronze



steel



anthracite



red



khaki



taupe



ecru



beige

Self-watering system included in all planters except those with basic finish

LACQUERED  
Ref. 57002F



crema



purjai red



orange



notte blue



white



black



bronze



steel



anthracite



red



khaki



taupe



ecru



beige



modo green



champany

Lacquered Polyethylene

## lighting

---

WHITE LED

Ref. 57002W



ice

White internally lit unit with LED technology. Available only in matte ice white finish.

RGBW LED

Ref. 57002L



ice

Unit with internal lighting with RGBW LED technology and remote control unit for switching colors. Available only in matte ice white finish. Remote control included.

## RGBW LED DMX

Ref. 57002D

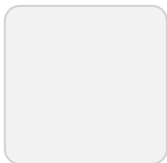


ice

Unit with internal lighting with RGBW LED technology and remote control unit for switching colors. Also controlled by DMX-1024 (wireless), enabling communication between one or more products simultaneously via the DMX transmitter (not included). There are two options to choose from: Professional XLR DMX and Home WIFI DMX. (Remote control included). Optional battery

## RGBW LED BATTERY

Ref. 57002Y

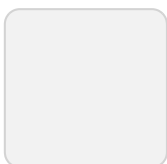


ice

Unit with internal lighting with battery-powered RGBW LED technology. Includes charger and remote control for switching colors and charger. Available only in matte ice white finish.

## RGBW LED DMX BATTERY

Ref. 57002DY



ice

Unit with internal lighting with RGBW LED technology and remote control unit for switching colors. Also controlled by DMX-1024 (wireless), enabling

communication between one or more products simultaneously via the DMX transmitter (not included). There are two options to choose from: Professional XLR DMX and Home WIFI DMX. (Remote control included).

## Ambients

---

