

Ufo table 200x100x72

by Ora Ĩto

The UFO design furniture collection, designed by Ora Ĩto for Vondom, is the outcome of “genetic mutation experiments” between the iconic languages of pagodas and UFOs. One of its distinctive features is the contrast created by the **negative and positive shapes**.

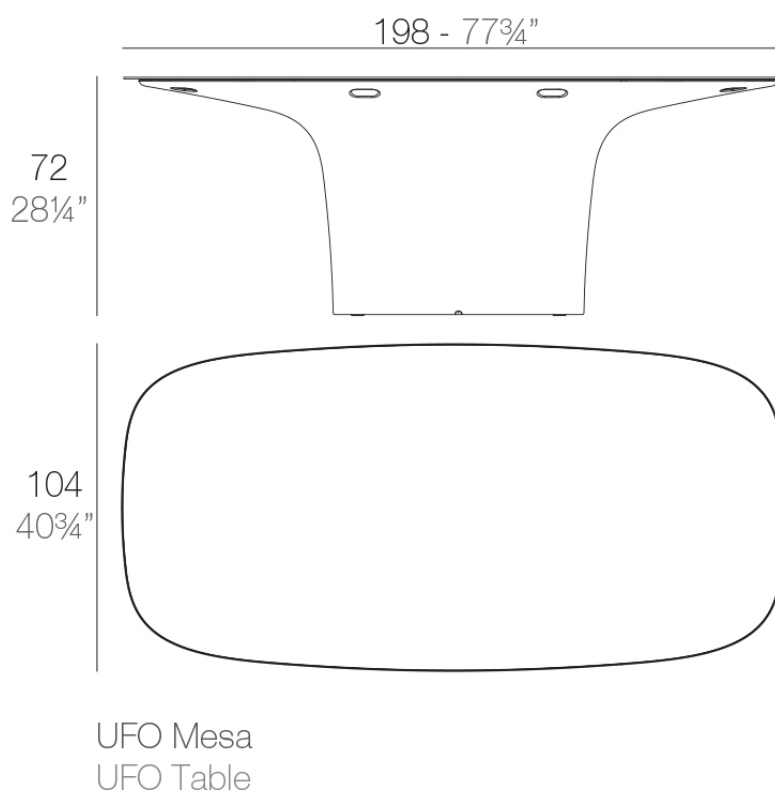


Info

Description

Made of polyethylene resin by rotational moulding. 100% Recyclable. Item suitable for indoor and outdoor use. Available in different finishes.

Weight: 84.82 Kg



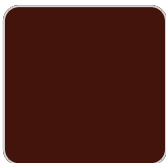
Finishes

finishes

BASIC
Ref. 63006



green



purjai red



orange



notte blue



crema



white



black



bronze



steel



anthracite



red



khaki



taupe



ecru



beige

Matt Polyethylene

LACQUERED

Ref. 63006F



purjai red



orange



notte blue



crema



white



black



bronze



steel



anthracite



red



khaki



taupe



ecru



beige



modo green



champany

Lacquered Polyethylene

lighting

WHITE LED

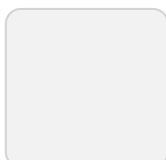
Ref. 63006W



White internally lit unit with LED technology. Available only in matte ice white finish.

RGBW LED

Ref. 63006L



Unit with internal lighting with RGBW LED technology and remote control unit for switching colors. Available only in matte ice white finish. Remote control included.

RGBW LED DMX

Ref. 63006D



Unit with internal lighting with RGBW LED technology and remote control unit for switching colors. Also controlled by DMX-1024 (wireless), enabling communication between one or more products simultaneously via the DMX transmitter (not included). There are two options to choose from: Professional XLR DMX and Home WIFI DMX. (Remote control included).
Optional battery

RGBW LED BATTERY

Ref. 63006DYB

Unit with internal lighting with battery-powered RGBW LED technology. Includes charger and remote control for switching colors and charger. Available only in matte ice white finish.

RGBW LED DMX BATTERY

Ref. 63006DY

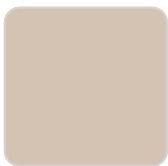


Unit with internal lighting with RGBW LED technology and remote control unit for switching colors. Also controlled by DMX-1024 (wireless), enabling communication between one or more products simultaneously via the DMX

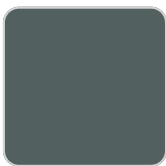
transmitter (not included). There are two options to choose from: Professional XLR DMX and Home WIFI DMX. (Remote control included).

tabletops

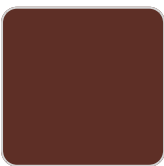
Solid Core
Ref. 63006B



crema



green



purjai red



orange



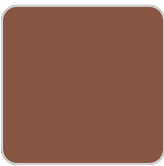
notte blue



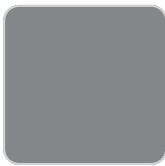
white



black



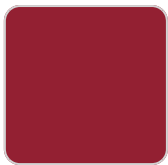
bronze



steel



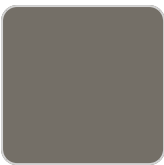
anthracite



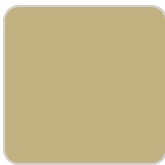
red



khaki



taupe



beige

HPL solid core

tabletops

Solid Core
Ref. VVAR02052



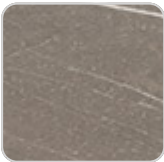
crema



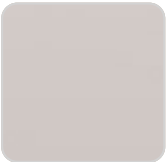
castoro fiber



yule brown



pulpis gray



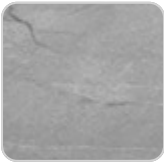
piombo gray



kandia black



cacao



yule gray



modo green



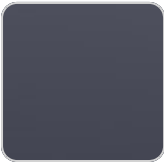
gioia bianco



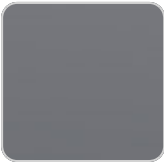
purjai red



british gray

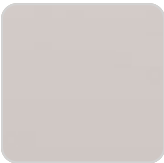


notte blue



traffic gray

HPL
Ref. VVAR02052



VONDOM

white(black edge)



black(black edge)



ecru(black edge)



HPL black edge

Ambients

