

Mari-sol table base h:50cm

by Eugeni Quitllet

Mari-sol Collection, designed by Eugeni Quitllet for Vondom, is composed by a designer table which has a masterpiece of design that **merges technological functionality with sensual aesthetics**. Its alluring form makes it the ideal choice for enhancing terraces worldwide.



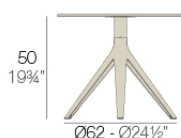
Info

Description

Extruded aluminum tube with cast aluminum base coated with epoxy baked painting. Item suitable for indoor and outdoor use. Table top not included.

Weight: 3.53 Kg

BASE 3 LEGS - BASE 3 PATAS



fixed top / fijo ref. 65009
 collapsable top / abatible ref. 65009T
 fixed for glass / fijo para vidrio ref. 65009V

MARI-SOL BASE MESA Ø62 H50
 MARI-SOL TABLE BASE Ø24½" H19¾"

TABLE TOPS OPTIONS - OPCIONES SOBRES

Ø50 cm Ø19¼"	50 x 50 cm 19¼" x 19¼"
Ø59 cm Ø23¼"	59 x 59 cm 23¼" x 23¼"
Ø69 cm Ø27¼"	

Finishes

finishes

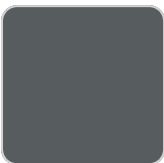
Fixed
Ref. 65009



white



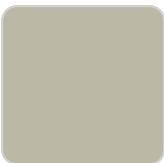
british gray



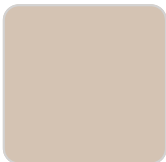
traffic gray



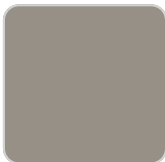
black



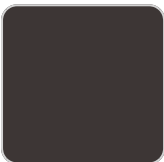
ecru



crema



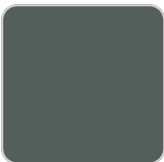
castoro fiber



cacao



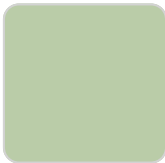
notte blue



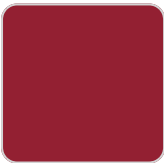
modo green



pickle



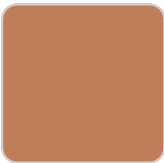
almond



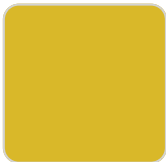
red



purjai red



melon



mostaza



Powder coated aluminum base with non collapsable attachment made of polyamide and fiber glass

COLLAPSIBLE TOP
Ref. 65009T



white



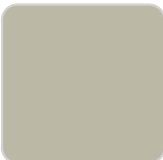
british gray



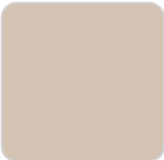
traffic gray



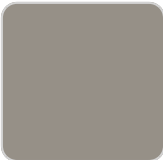
black



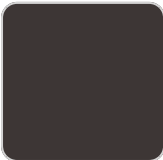
ecru



crema



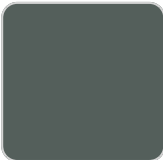
castoro fiber



cacao



notte blue



modo green



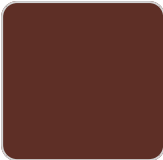
pickle



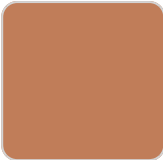
almond



red



purjai red



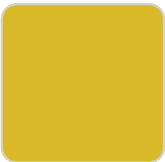
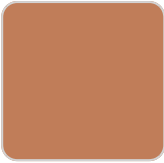
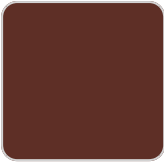
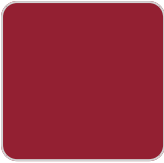
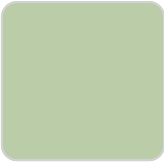
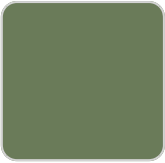
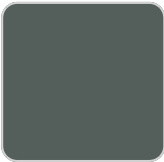
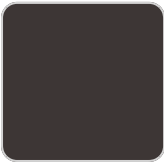
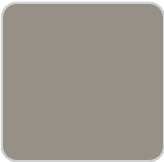
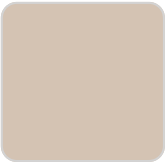
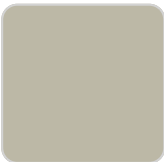
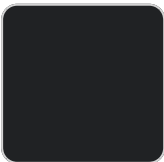
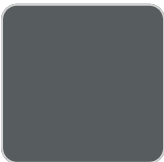
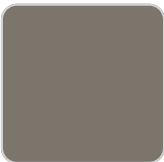
melon





Powder coated aluminum base with 90° collapsable attachment made of polyamide and fiber glass

Fixed glass
Ref. 65009V



mostaza



Powder coated aluminum base with non collapsable aluminum attachment powder coated, made exclusively for our glass tops.

Ambients

