

## Mari-sol table base ø80 h:73cm

by Eugeni Quitllet

Mari-sol Collection, designed by Eugeni Quitllet for Vondom, is composed by a designer table which has a masterpiece of design that **merges technological functionality with sensual aesthetics**. Its alluring form makes it the ideal choice for enhancing terraces worldwide.



## Info

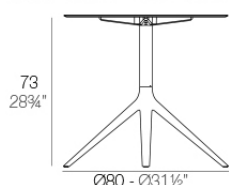
---

### Description

Extruded aluminum tube with cast aluminum base coated with epoxy baked painting. Item suitable for indoor and outdoor use. Table top not included.

Weight: 5.18 Kg

BASE 4 LEGS - BASE 4 PATAS



fixed top / fijo ref: 65016

fixed for glass / fijo para vidrio ref: 65016V

MARI-SOL BASE MESA Ø80 H73

MARI-SOL TABLE BASE Ø31 1/2" H28 3/4"

TABLE TOPS OPTIONS - OPCIONES SOBRES

Ø79 cm Ø31"	69 x 69 cm 27 1/4" x 27 1/4"
Ø89 cm Ø25"	79 x 79 cm 31" x 31"
Ø100 cm Ø39 1/4"	89 x 89 cm 25" x 25"

Finishes

finishes

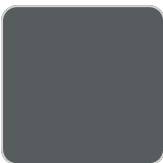
Fixed  
Ref. 65016



white



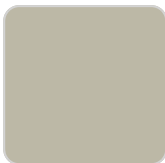
british gray



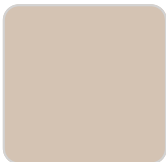
traffic gray



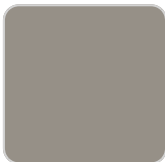
black



ecru



crema



castoro fiber



cacao



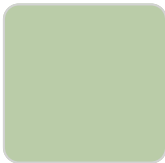
notte blue



modo green



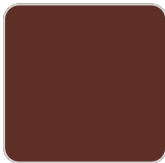
pickle



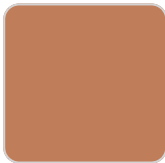
almond



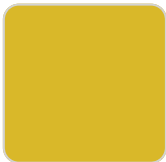
red



purjai red



melon



mostaza

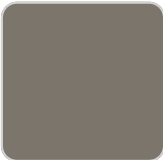


Powder coated aluminum base with non collapsable attachment made of polyamide and fiber glass

Fixed glass  
Ref. 65016V



white



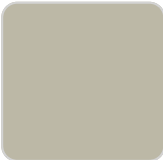
british gray



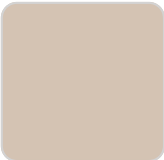
traffic gray



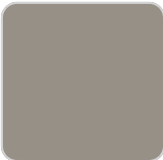
black



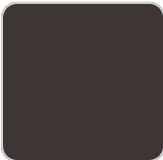
ecru



crema



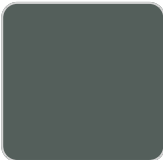
castoro fiber



cacao



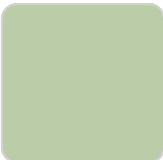
notte blue



modo green



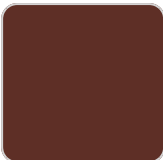
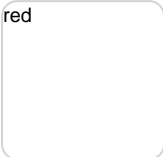
pickle



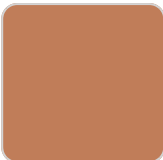
almond



red



purjai red



melon



mostaza



Powder coated aluminum base with non collapsable aluminum attachment powder coated, made exclusively for our glass tops.

## Ambients

---

