

Mari-sol 3-legged double table base

by Eugeni Quitllet

Mari-sol Collection, designed by Eugeni Quitllet for Vondom, is composed by a designer table which has a masterpiece of design that **merges technological functionality with sensual aesthetics**. Its alluring form makes it the ideal choice for enhancing terraces worldwide.



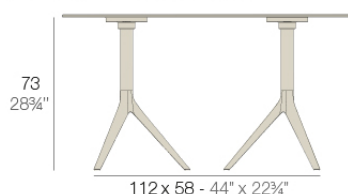
Info

Description

Extruded aluminum tube with cast aluminum base coated with epoxy baked painting. Item suitable for indoor and outdoor use. Table top not included.

Weight: 6.88 Kg

BASE 3 LEGS - BASE 3 PATAS



fixed top / fijo *ref.6503I*

collapsible top / abatible *ref.6503IT*

MARI-SOL BASE DOBLE 112x58 H73

MARI-SOL DOUBLE BASE 44x22 3/4 inch H28 3/4 inch

TABLE TOPS OPTIONS - OPCIONES SOBRES



119 x 69 cm

46 3/4 inch x 27 1/4 inch

Finishes

finishes

Fixed

Ref. 65031



white



british gray



traffic gray



black



ecru



crema



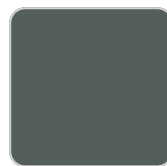
castoro fiber



cacao



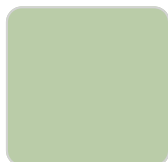
notte blue



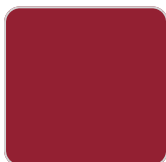
modo green



pickle



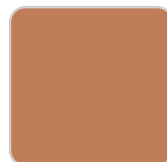
almond



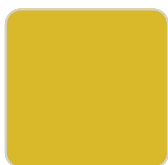
red



purjai red



melon



mostaza

Powder coated aluminum base with non collapsable attachment made of polyamide and fiber glass

COLLAPSIBLE TOP

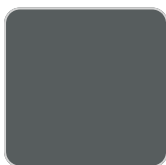
Ref. 65031T



white



british gray



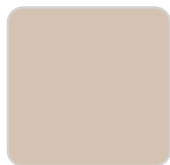
traffic gray



black



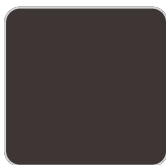
ecru



crema



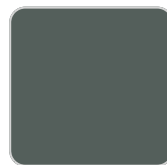
castoro fiber



cacao



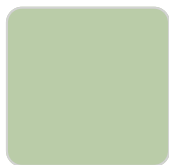
notte blue



modo green



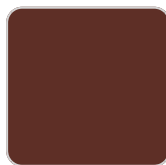
pickle



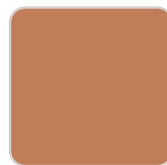
almond



red



purjai red



melon



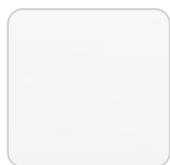
mostaza

Powder coated aluminum base with 90° collapsable attachment made of polyamide and fiber glass

tabletops

HPL

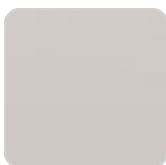
Ref. 66031



white



black



ecru

HPL black edge

