

## Mari-sol 4-legged double table base

by Eugeni Quitllet

Mari-sol Collection, designed by Eugeni Quitllet for Vondom, is composed by a designer table which has a masterpiece of design that **merges technological functionality with sensual aesthetics**. Its alluring form makes it the ideal choice for enhancing terraces worldwide.



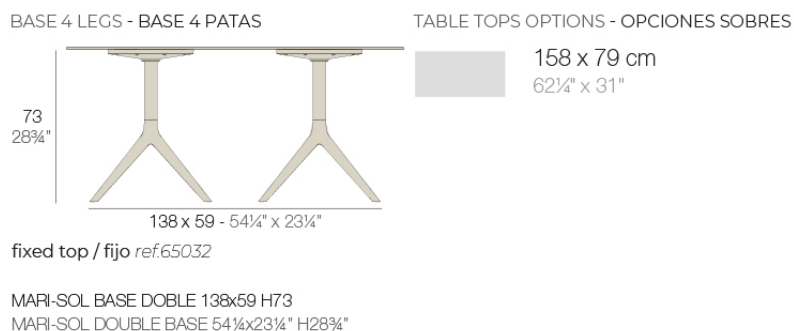
## Info

---

### Description

Extruded aluminum tube with cast aluminum base coated with epoxy baked painting. Item suitable for indoor and outdoor use. Table top not included.

Weight: 9.8 Kg



## Finishes

---

### finishes

---

Fixed

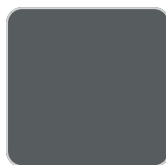
Ref. 65032



white



british gray



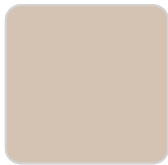
traffic gray



black



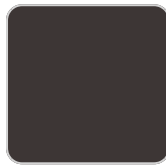
ecru



crema



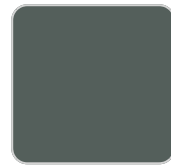
castoro fiber



cacao



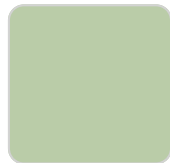
notte blue



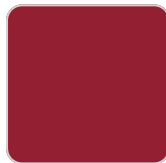
modo green



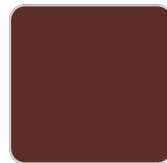
pickle



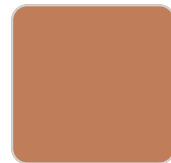
almond



red



purjai red



melon



mostaza

Powder coated aluminum base with non collapsable attachment made of polyamide and fiber glass

## tabletops

---

HPL

Ref. 66413

HPL black edge

Solid Core

Ref. 66413B

HPL solid core

