

Mari-sol table base ø96,5 h:50cm

by Eugeni Quitllet

Mari-sol Collection, designed by Eugeni Quitllet for Vondom, is composed by a designer table which has a masterpiece of design that **merges technological functionality with sensual aesthetics**. Its alluring form makes it the ideal choice for enhancing terraces worldwide.



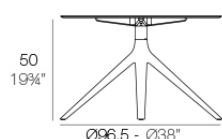
Info

Description

Extruded aluminum tube with cast aluminum base coated with epoxy baked painting. Item suitable for indoor and outdoor use. Table top not included.

Weight: 4.01 Kg

BASE 4 LEGS - BASE 4 PATAS



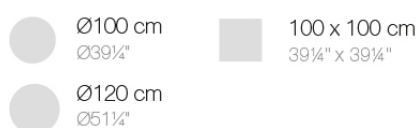
fixed top / fijo ref. 65033

fixed for glass / fijo para vidrio ref. 65033V

MARI-SOL BASE MESA Ø96'5 H50

MARI-SOL TABLE BASE Ø38" H19 3/4"

TABLE TOPS OPTIONS - OPCIONES SOBRES



Finishes

finishes

Fixed

Ref. 65033



white



british gray



traffic gray



black



ecru



crema



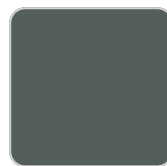
castoro fiber



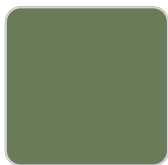
cacao



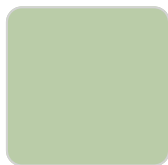
notte blue



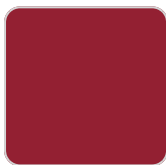
modo green



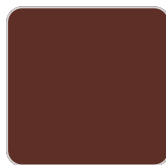
pickle



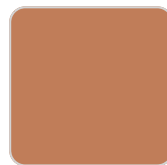
almond



red



purjai red



melon



mostaza

Powder coated aluminum base with non collapsable attachment made of polyamide and fiber glass

Fixed glass

Ref. 65033V

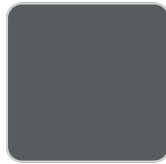
VONDOM



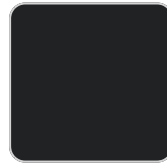
white



british gray



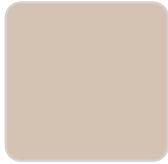
traffic gray



black



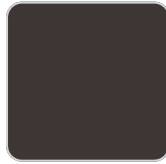
ecru



crema



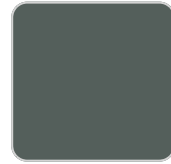
castoro fiber



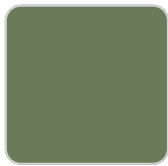
cacao



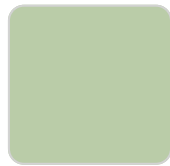
notte blue



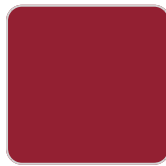
modo green



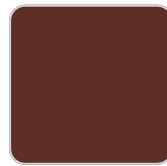
pickle



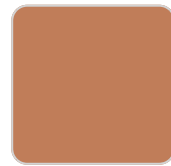
almond



red



purjai red



melon



mostaza

Powder coated aluminum base with non collapsable aluminum attachment powder coated, made exclusively for our glass tops.

