

## Manta swivel armchair

by Eugeni Quitllet

Introducing our latest collection of chairs suitable for both indoor and outdoor use. The Manta chair is an incredibly versatile piece that effortlessly fits into any space, be it a residence, workspace, or public venue. The chair's interchangeable design comprises seats and bases that can be combined in numerous ways, providing endless possibilities to create an ideal seating solution for any setting.

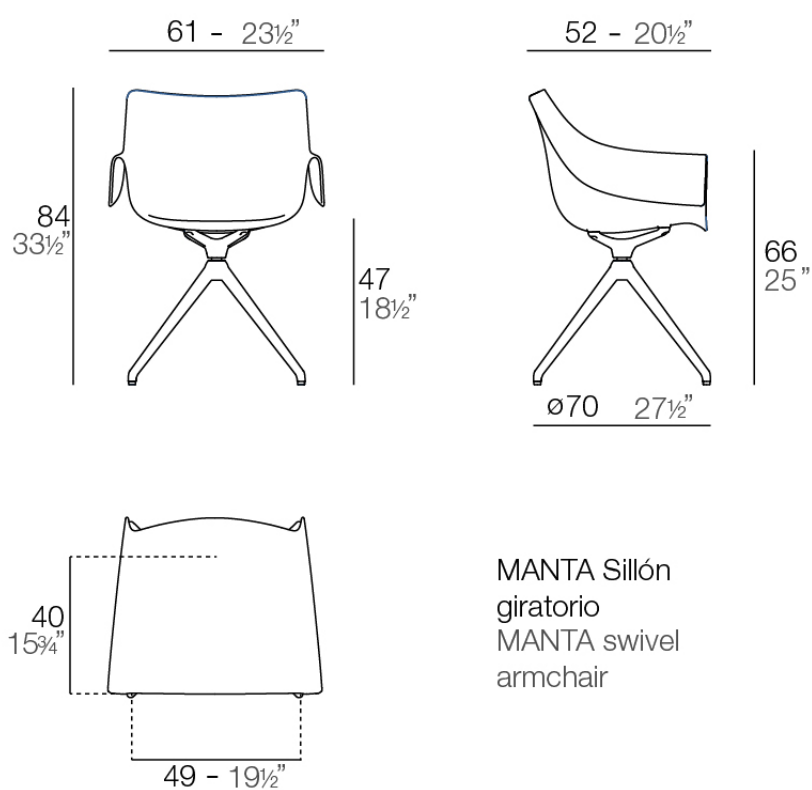


## Info

---

### Description

Weight: 8.61 Kg



MANTA Sillón  
giratorio  
MANTA swivel  
armchair

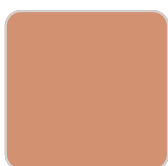
## Finishes

---

### finishes

---

BASIC PP  
Ref. 65053



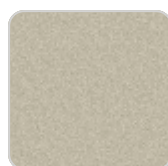
melon



white



black



ecru



tortora

Available in various colors

### legs

---

LEGS  
Ref. 65053E



white



black

## Ambients

---

