

Manta swivel caster armchair

by Eugeni Quitllet

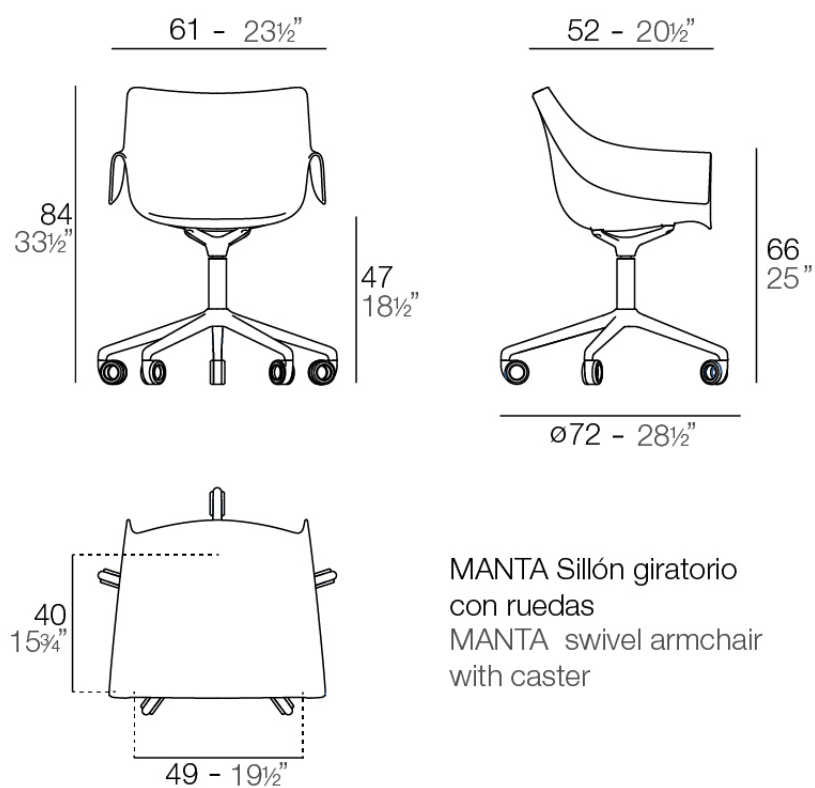
Introducing our latest collection of chairs suitable for both indoor and outdoor use. The Manta chair is an incredibly versatile piece that effortlessly fits into any space, be it a residence, workspace, or public venue. The chair's interchangeable design comprises seats and bases that can be combined in numerous ways, providing endless possibilities to create an ideal seating solution for any setting.



Info

Description

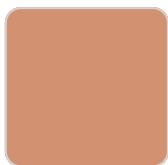
Weight: 7.53 Kg



Finishes

finishes

BASIC PP
Ref. 65054



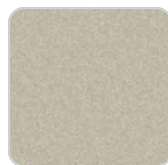
melon



white



black



ecru



tortora

Available in various colors

legs

LEGS
Ref. 65054E



white



black

Ambients

