

Frame mesa aluminio 300x120x74

por Ramón Esteve

La colección outdoor Frame de Vondom, diseñada por Ramón Esteve, nace de la generación de formas serenas y atemporales valiéndose del marco como geometría elemental. Motivado por las infinitas posibilidades que nos ofrece el material, empleando una tecnología avanzada, se exploran los límites de éste.

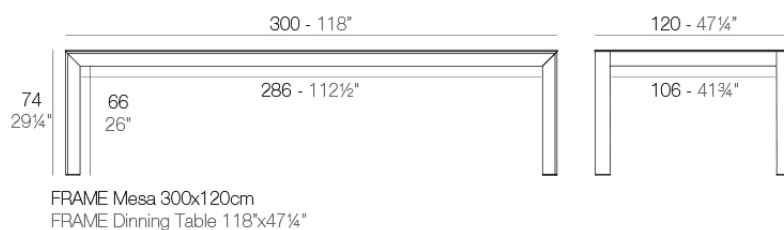


Info

Descripción

Aluminio extrusionado con base de fundición de aluminio lacado. Tablero en HPL. Apto para uso interior y exterior.

Peso: 70.7 Kg



Acabados

acabados

HPL Black Edge Top

Ref. 54242F



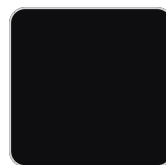
white



gray



anthracite



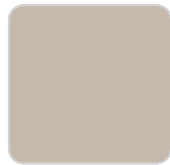
black



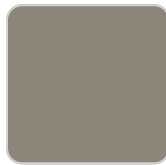
cream



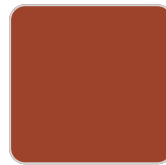
camel



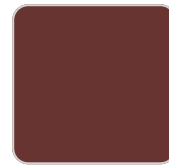
ecru



tortora



clay



garnet



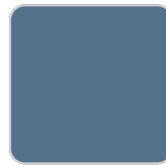
brown



smoked



green



ocean



blue

Perfil de aluminio en acabado lacado.

HPL Solid Core Top

Ref. 54242FB



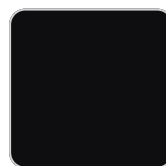
white



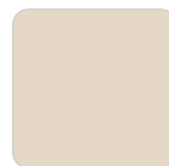
gray



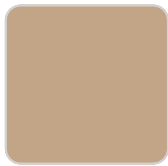
anthracite



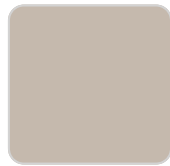
black



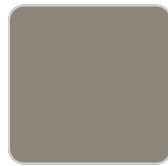
cream



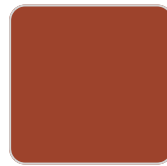
camel



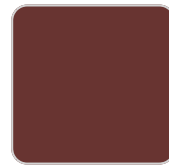
ecru



tortora



clay



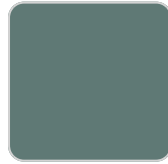
garnet



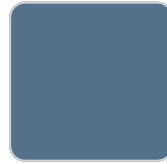
brown



smoked



green



ocean



blue

Perfil de aluminio en acabado lacado.

tableros

Dekton

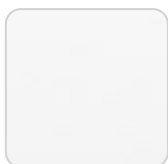
Ref. 54242FM

SUPERFICIE CERAMICA

tableros

HPL Black Edge Top

Ref. VVAR02597



white(black edge)



ecru(black edge)



black(black edge)

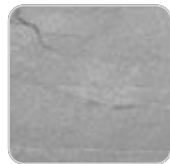
HPL Solid Core Top

Ref. VVAR02598

VONDOM



black stone



gray stone



white stone



smoked



ecru stone



tortora stone



white (white edge)



oak1



oak2



ecru



tortora



cream



garnet



brown



green



blue



anthracite

Ambients

