

Faz table base ø80x50h

by Ramón Esteve

Vondom's Faz collection, designed by Ramón Esteve, is one of the firm's most iconic collections. It stands out for its modular design and sophistication, representing harmony, serenity and timelessness through mineral and emphatic shapes. Faz transforms environments with its unique combination of material and light, creating an enveloping and exclusive atmosphere.



Info

Description

Weight: 5.31 Kg

BASE 4 LEGS - BASE 4 PATAS



fixed top / fijo ref: 54140

fixed for glass / fijo para vidrio ref: 54140V

FAZ BASE MESA Ø80 H50

FAZ TABLE BASE Ø31 1/2" H19 3/4"

TABLE TOPS OPTIONS - OPCIONES SOBRES



Ø79 cm
Ø31"



69 x 69 cm
27 1/4" x 27 1/4"



Ø89 cm
Ø25"



79 x 79 cm
31" x 31"



Ø100 cm
Ø39 1/4"



89 x 89 cm
25" x 25"

Finishes

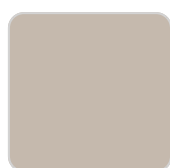
finishes

ALUMINIUM BASE

Ref. 54140V



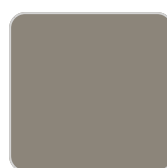
white



ecru



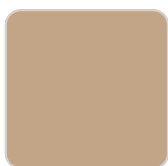
smoked



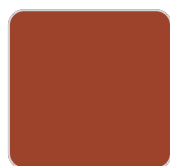
tortora



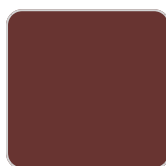
cream



camel



clay



garnet



brown



green



blue



gray



anthracite



black



ocean

Powder coated aluminum base with non collapsable aluminum attachment powder coated, made exclusively for our glass tops.

Ambients

