

Frame aluminium table 160x80x74

by Ramón Esteve

Frame, outdoor collection by Ramon Esteve, comes from generating serene and timeless shapes using the framework as elementary geometry. The endless possibilities offered by the material using advanced technology, was the motivation to explore the limits.

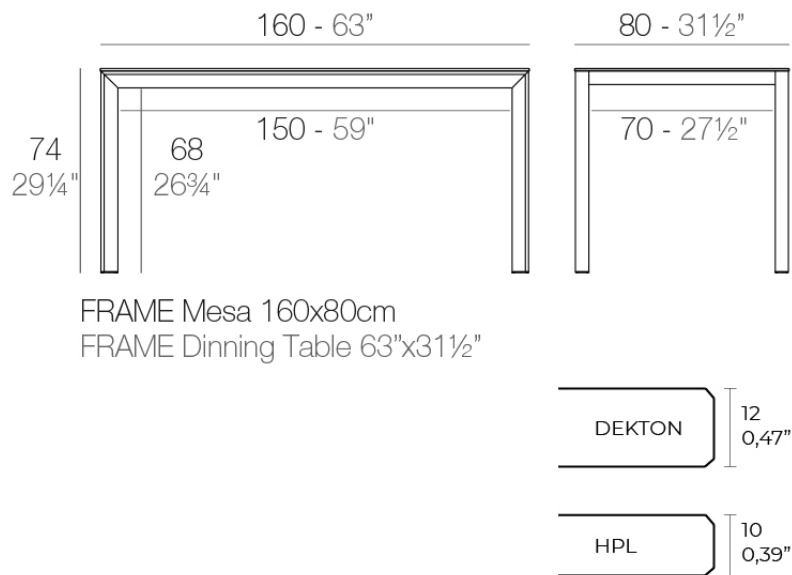


Info

Description

Extruded aluminum with cast lacquered aluminum base. HPL Table top ó Dekton Table top. Item suitable for indoor and outdoor use. HPL Table top.

Weight: 27.72 Kg



Finishes

finishes

ALUMINIUM
Ref. 54236FM



white



british gray



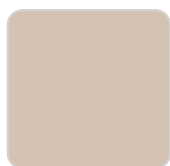
traffic gray



black



ecru



crema



castoro fiber



cacao



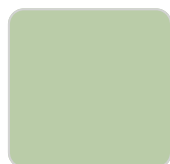
notte blue



modo green



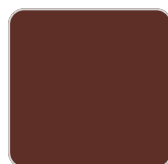
pickle



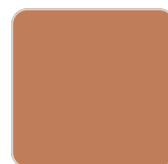
almond



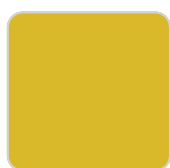
red



purjai red



melon



mostaza

Lacquered aluminium profile.

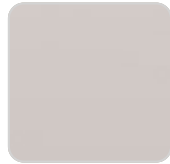
tabletops

HPL
Ref. VVAR02573

VONDOM



black(black edge)



ecru(black edge)



white(black edge)

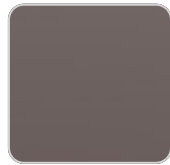
HPL black edge

Solid Core

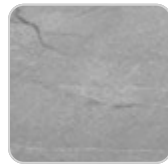
Ref. VVAR02574



kandia black



cacao



yule gray



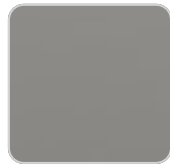
modo green



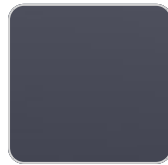
gioia bianco



purjai red



british gray



notte blue



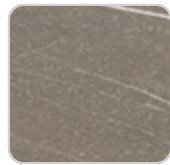
yule brown



traffic gray



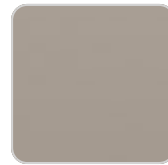
white (white edge)



pulpis gray



crema



castoro fiber



piombo gray

Solid Core wood

Ref. VVAR02574



oak1



oak2

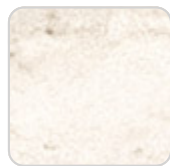
VONDOM

Dekton

Ref. VVAR02833



entzo



danae



kelya

Ambients

