

## Vineyard dining table wheel

by Ramón Esteve

The Vineyard collection, designed by Ramón Esteve, captures the essence of Mediterranean style, combining elegance and comfort in each of its pieces. Inspired by vineyards and outdoor living, this collection is perfect for creating relaxed and welcoming environments.

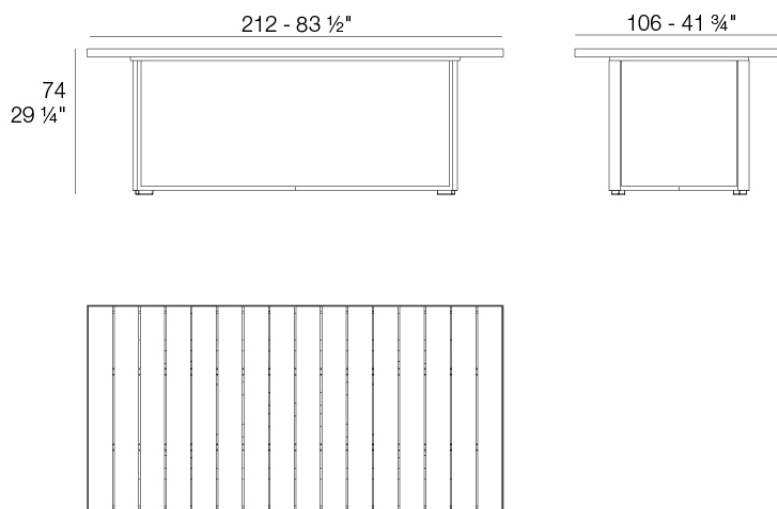


## Info

---

### Description

Weight: 32 Kg



Versión con patas  
Leg version

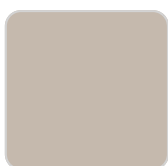
## Finishes

---

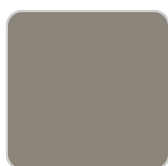
### finishes

---

ALUMINIUM  
Ref. 54505ZSU



ecru



tortora

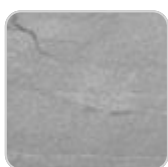


cream

### panel/top

---

Solid Core  
Ref. 54505AA



gray stone



white stone



smoked



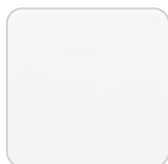
ecru stone



tortora stone



black stone



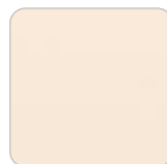
white (white edge)



ecru



tortora



cream



garnet



brown



green



blue



anthracite

Solid Core wood  
Ref. 54505AA



walnut



oak1



oak2

Teak  
Ref. 54505AA



natural teak



weathered teak

## Ambients

---

